

HOMES & DESIGN[®]

Luxury Homes | Interior Design | Home Furnishings



Southwest Florida Edition

NAPLES KITCHEN & BATH + DIANA HALL DESIGN

BEFORE



This beguiling home sits on stilts on the Venetian Bay and is reminiscent of a long and narrow townhome. The total renovation by Naples Kitchen & Bath and Diana Hall Design includes a complete update of the interior spaces.

This jewelry box of a home has been transformed to a chic and elegant space overlooking sparkling waters. Upon entering is a gorgeous stairway with continuous hardwood floors, and at the top of the stairs is a gorgeous view of the main living area. The once dark galley kitchen has been given new life with a taupe gray cabinet by Crystal Cabinet Works, accented by a stunning custom gold hood vent and gold hardware throughout. New fully integrated appliances by Sub-Zero, Wolf, and Bosch blend seamlessly with this kitchen design. The premium cabinet storage has two decorative open cabinets with recessed lighting that illuminate the gorgeous natural coral, flanking the brass hood, and includes a coffee station and pantry storage. The Cristallo quartzite waterfall over the exposed bar edge coupled with Lucite counter stools add elegance and make this the perfect place for guests to have cocktails while their host is working in the kitchen. ▶





The great room is the epitome of elegant entertaining. The dry bar with hand-painted gold cabinets and a stunning metallic marble backsplash creates the perfect space to prepare cocktails without leaving guests. The mini fridge has been beautifully camouflaged with a wooden door front, blending seamlessly with the surrounding cabinetry. The sofas and swivel chairs are from Hickory Chair and have a neutral tone to complement the rust, ochre, and beige tones in the rug and throughout the space. The client wanted her Hermes tray and throw blanket to be the stars of the show in the living space; they make a statement while not feeling out of place. Serving as the entry console is a custom 102" locally made floating cabinet in a metallic linen finish, which assists in keeping the small space open and airy. ▶



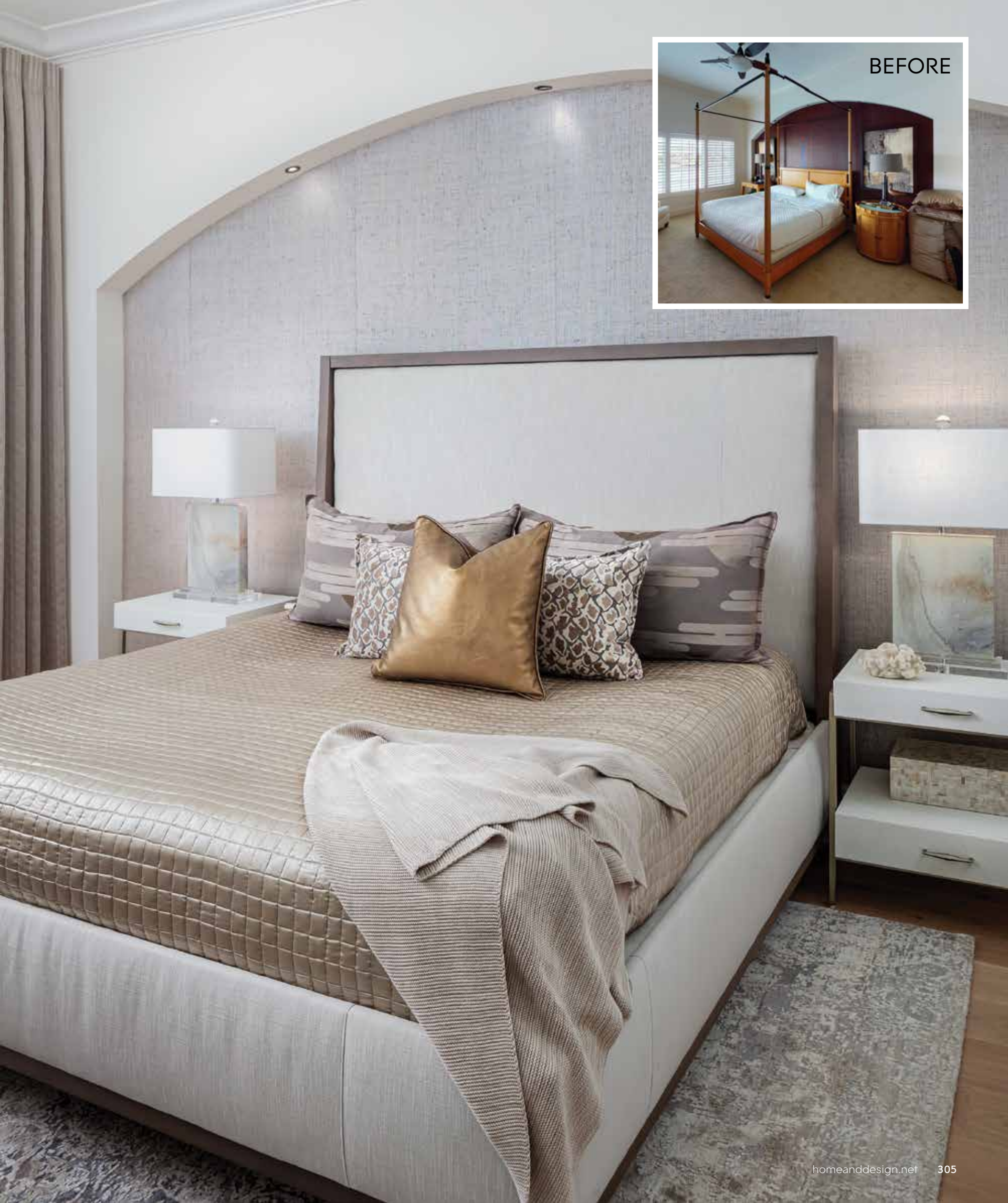
NAPLES KITCHEN & BATH + DIANA HALL DESIGN

Down a long hallway of eclectic art, the primary suite keeps with the warm bronze tones. This Fairfield bed and shagreen and gold nightstands complete the look. Rust colored grasscloth was added to the existing arch. The main bathroom has been transformed from traditional to a more transitional style. Spectacular carved Carrera marble fits together to create blossoms along the tub and shower wall, while the carefully selected cabinetry provides optimal storage space. The challenge was to incorporate a free-standing tub and still have ample space for a sizeable shower. ►



BEFORE





BEFORE

NAPLES KITCHEN & BATH + DIANA HALL DESIGN



Not to be missed is the powder room, which is like being inside a life-size jewelry box. This space has lots of glam packed into a modest sized bathroom. The main wall is adorned with marble and gold mosaic tile, exclusively found at NKB, accompanied by the beautiful gold and glass sconces. The rest of the walls are dressed in a silk grasscloth by Phillip Jeffries in a neutral tone. Completing this magical space is the lacquered floating vanity, underlit with LED strip lighting.

With a coastal appeal, this guest bedroom is a symphony of seafoam green. The wall color, bedding ensemble, and drapery all play off each other, creating a serene retreat for visiting family and friends. The Bungalow 5 nightstands and dresser are covered in white lacquered grasscloth, keeping with the light coastal feel in this space. Accommodating two queen beds for guests while maintaining an open and inviting space was accomplished with the use of simple moldings applied to the headboard wall, making the wall feel longer than it is while also adding interest. ▶





Tucked away on the third-floor landing is a cozy den, which can also serve as an office space or storage. The cream sofa accompanied by the two chocolate-brown fur ottomans add a touch of whimsy, giving this room a playful vibe. The client's fish art above the sectional is enhanced by the unexpected Hermes Orange tray ceiling.

Overall, this home had its challenges due to the age of the building and the long, narrow floor plan, but Naples Kitchen & Bath and Diana Hall Design made it work with specially designed spaces perfectly suited for this client. ■

Courtesy of Naples Kitchen & Bath
www.napleskb.com

Diana Hall Design
www.dianahalldesign.com

Photography by Rick Bethem Photography