

SOPHISTICATED SPARKLE

Sea glass... the name itself sparkles and shimmers, conjuring images of sandy shores dotted with tumbled gems of blues and greens, glints of color juxtaposed with organic elements like coral and seashells. Interior designer Diana Hall and Elizabeth Manchego of Diana Hall Design captured the essence of sea glass in this unit of the 27-story high-rise coastal condominium in Bonita Bay. "Seaglass is the most contemporary building in Bonita Bay," explains Hall. "Many of the units reflect this in their interior design." >

286 homedesign.net

Left: Immediately catching the eye in the great room, the entertainment wall is clad with 24-by-24-inch natural porcelain tile in Sublime, set on a staggered pattern and inset with jewel-like glass accent tile from Cleary Tile in Avalon West. The 110-inch long Old Bicycle Design console from International Design Source is finished with a faux linen hand-finished custom combination of turquoise, mint green, silver, and slate. A pair of rubbery mint green cube ottomans add colorful texture.

Below: A focal point of the elevator foyer that Manchego calls "a little jewelry box", the Diana Hall Design team revealed a wall of niches for this client based on one they designed for her previous residence. A mix of organic and hand-blown glass pieces and natural sea coral greets neighbors and visitors.



homedesign.net 287

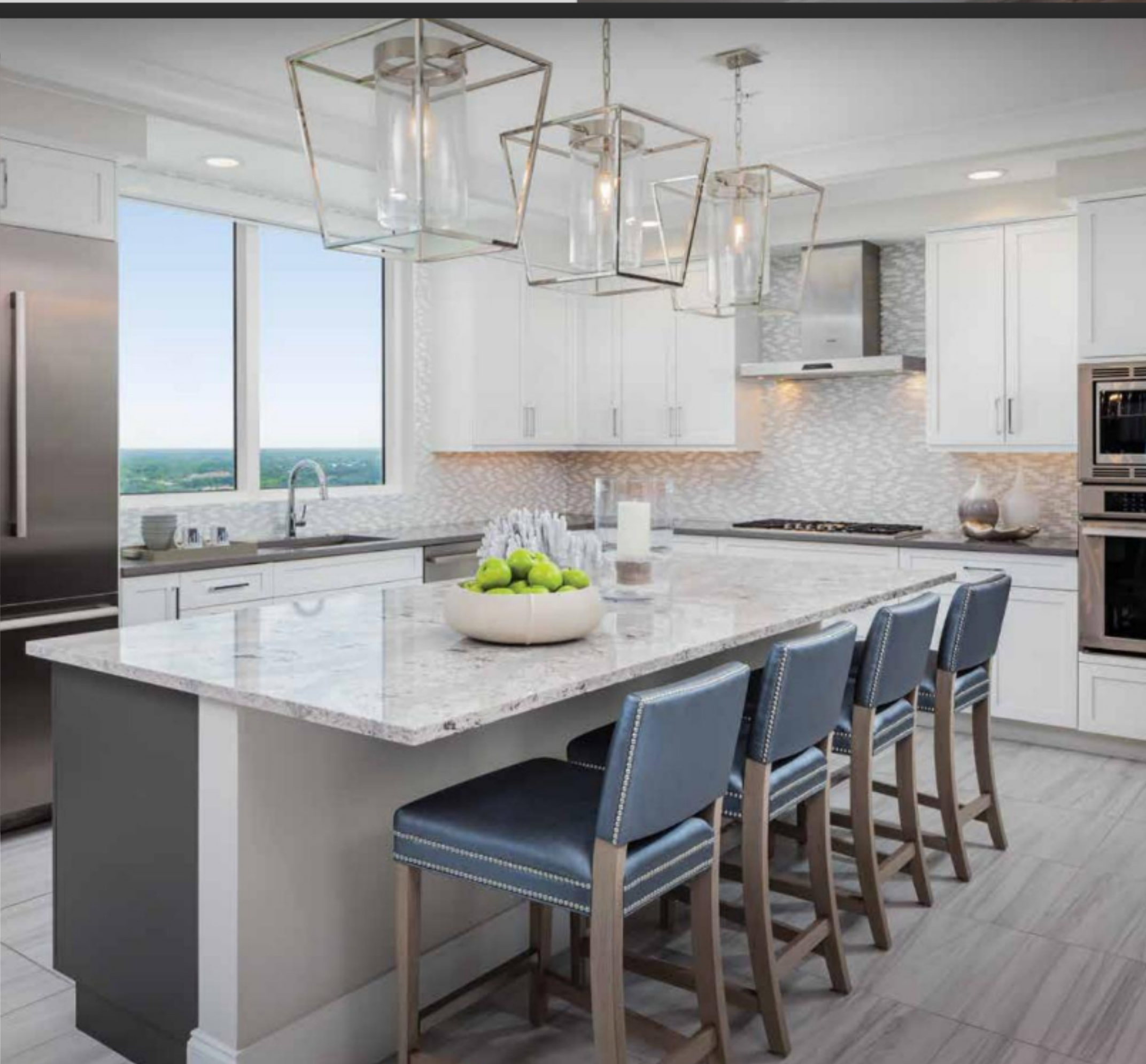


Hall should know: her talents have graced the interiors of more than a dozen of the elegant, upscale units in Seaglass. "This unit was designer-ready," continues Hall. "We started working with our client two years ago, choosing the flooring and other background details from the Seaglass design center."

The duo labored to learn their client's style during their first design project with her, a residence in neighboring Tavira at Bonita Bay. "She wanted to replicate much of the style," says Manchego, noting, "This is a more contemporary spin on her Tavira unit." >

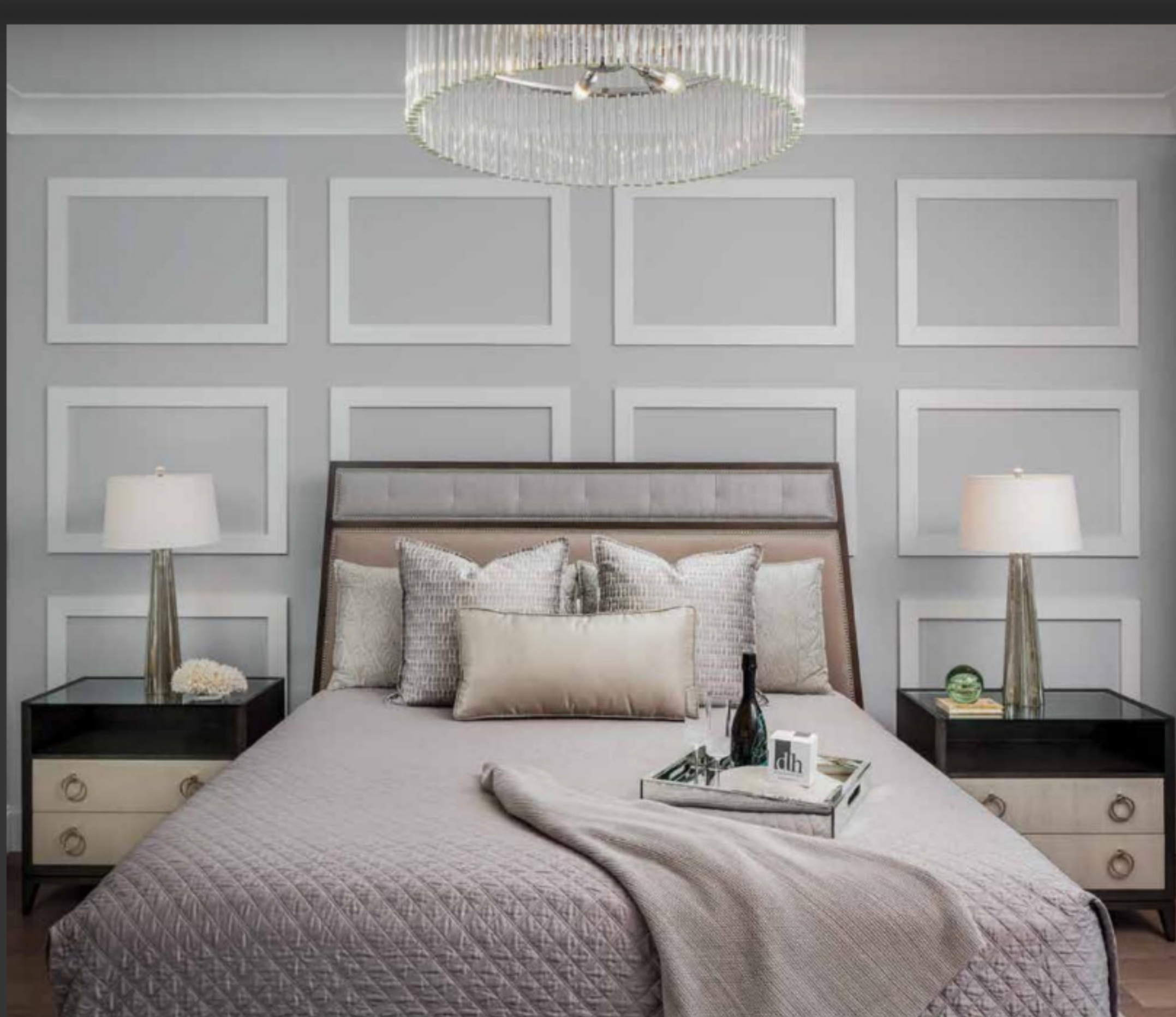
Above: The Vanguard Furniture dining set features armchairs backed with a fun linen-embroidered geometric print. Hall chose a black glass bar cart, also by Vanguard Furniture from International Design Source, to provide the solution for a service piece without blocking the view over the low window. Lucite details on the Capital Lighting polished nickel chandelier from Wilson Lighting tie into the living room pieces. "We have a lot of hard surfaces in the dining area, so I chose a soft floral detail in the centerpiece," Hall points out.

288 homedesign.net



Above: A quartet of Vanguard Furniture vegan leather counter stools in shimmering, pearlescent Pewter with chrome nailhead trim harkens under the kitchen island of Summer Hill, illuminated by a trio of oversized lantern-style polished nickel pendants from Wilson Lighting. The perimeter counters are topped with cement-colored quartz. Frosted glass and white chiseled marble tiles form the counter-to-ceiling backsplash.

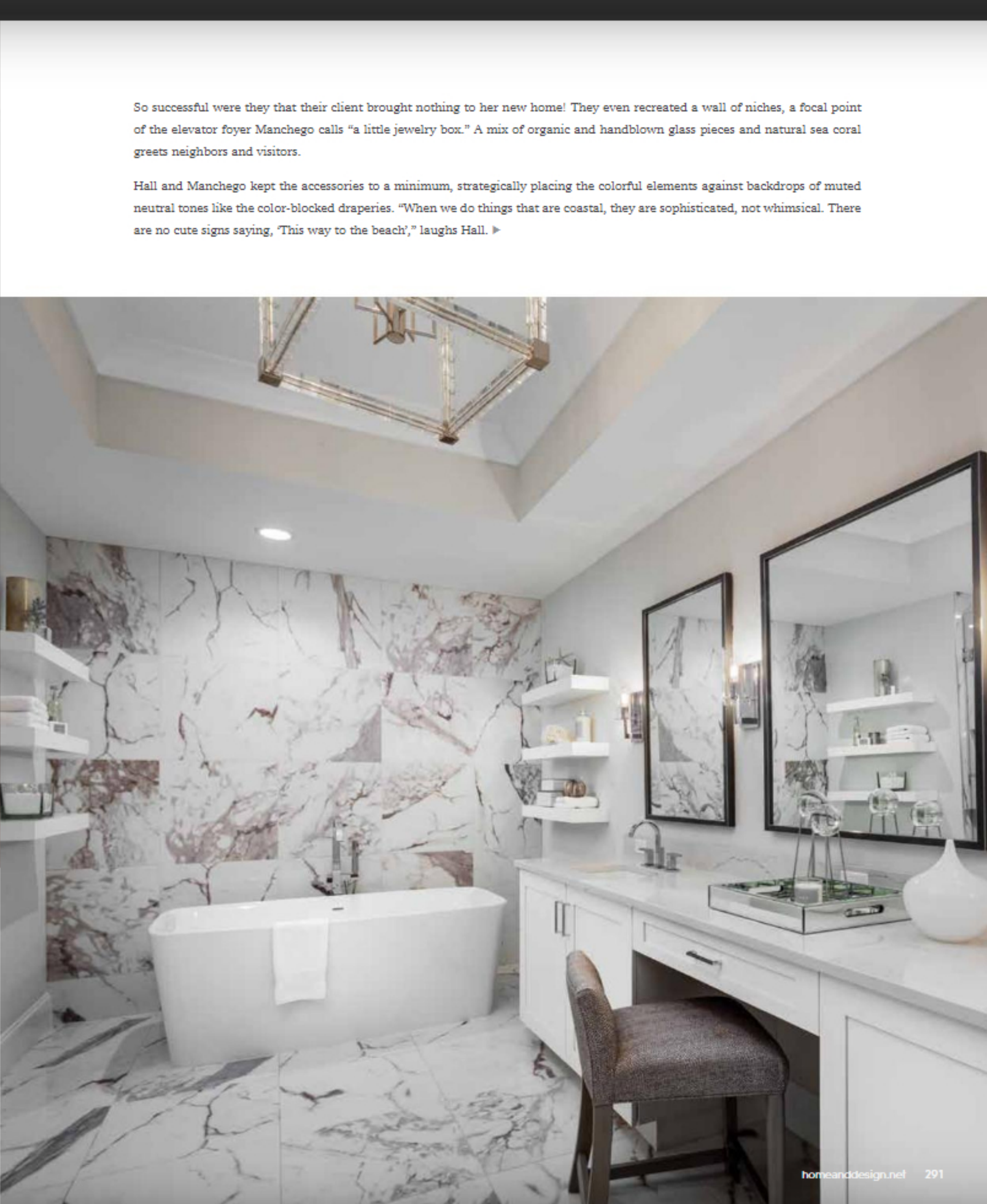
homedesign.net 289



Above: "This is my very favorite bed!" enthuses Hall. The Vanguard Sandbox bed in dark espresso features a tapered headboard, two fabrics — one tufted — and nailhead trim. Behind it, a geometric pattern crafted from flat stock molding accents the wall. A low-sheen washable silk Alessandra quilted coverlet dresses the bed from International Design Source, hosting a collection of equally shimmering Kravet pillows. Wood, linen, and glass nightstands from Interlude flank the bed, topped with Regina Andrew lamps.

Right: "Changing out the standard tub to this freestanding one really made all the difference in this bath. Running floating shelves up the walls gives the bath a spa-like feel. There is a lot of movement and contrast in the 24-by-24-inch marble-look porcelain tile and it serves as a decorative element in itself," declares Hall.

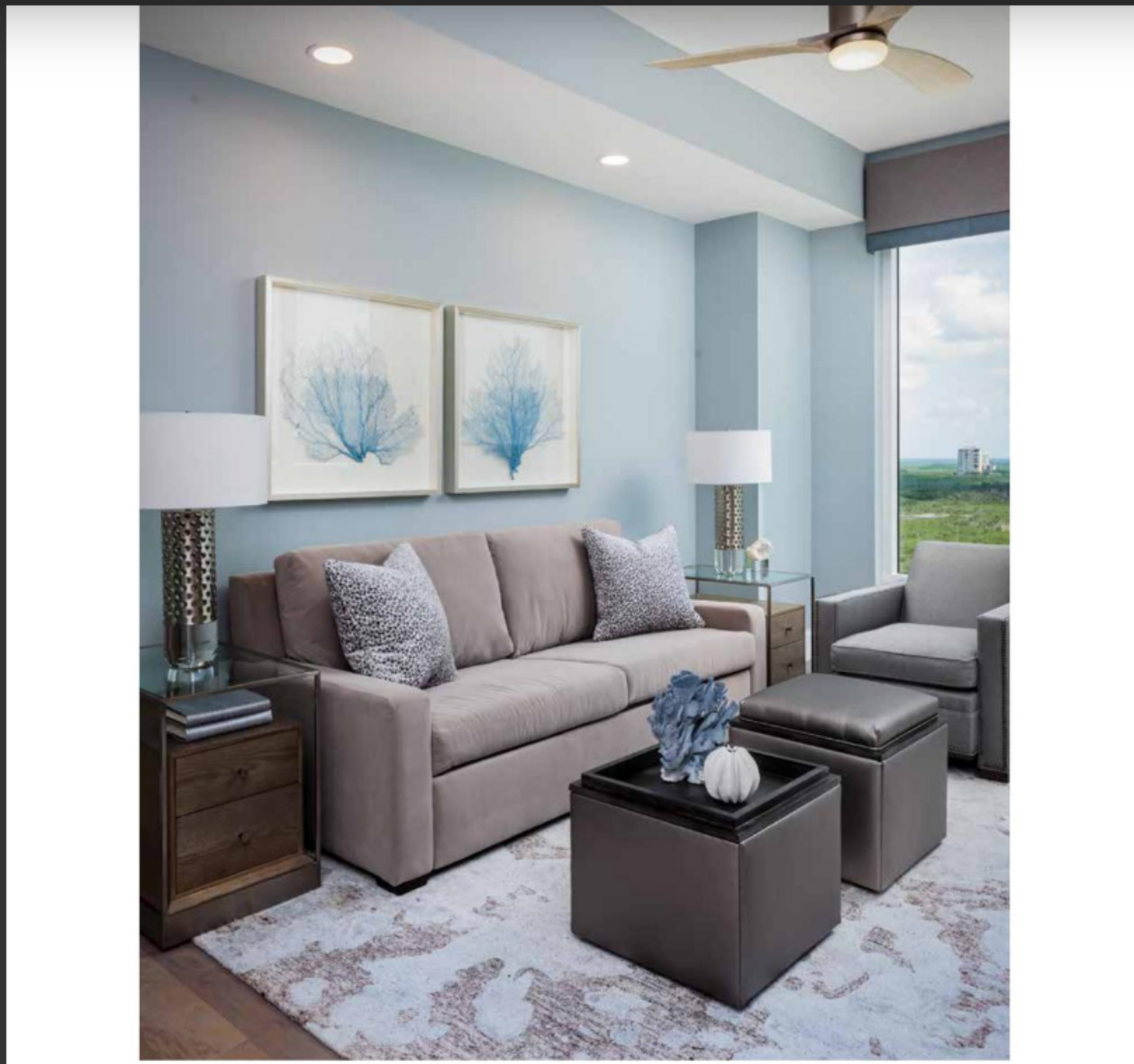
290 homedesign.net



So successful were they that their client brought nothing to her new home! They even recreated a wall of niches, a focal point of the elevator foyer Manchego calls "a little jewelry box." A mix of organic and hand-blown glass pieces and natural sea coral greets neighbors and visitors.

Hall and Manchego kept the accessories to a minimum, strategically placing the colorful elements against backdrops of muted neutral tones like the color-blocked draperies. "When we do things that are coastal, they are sophisticated, not whimsical. There are no cute sign saying, 'This way to the beach!'" laughs Hall. >

homedesign.net 291



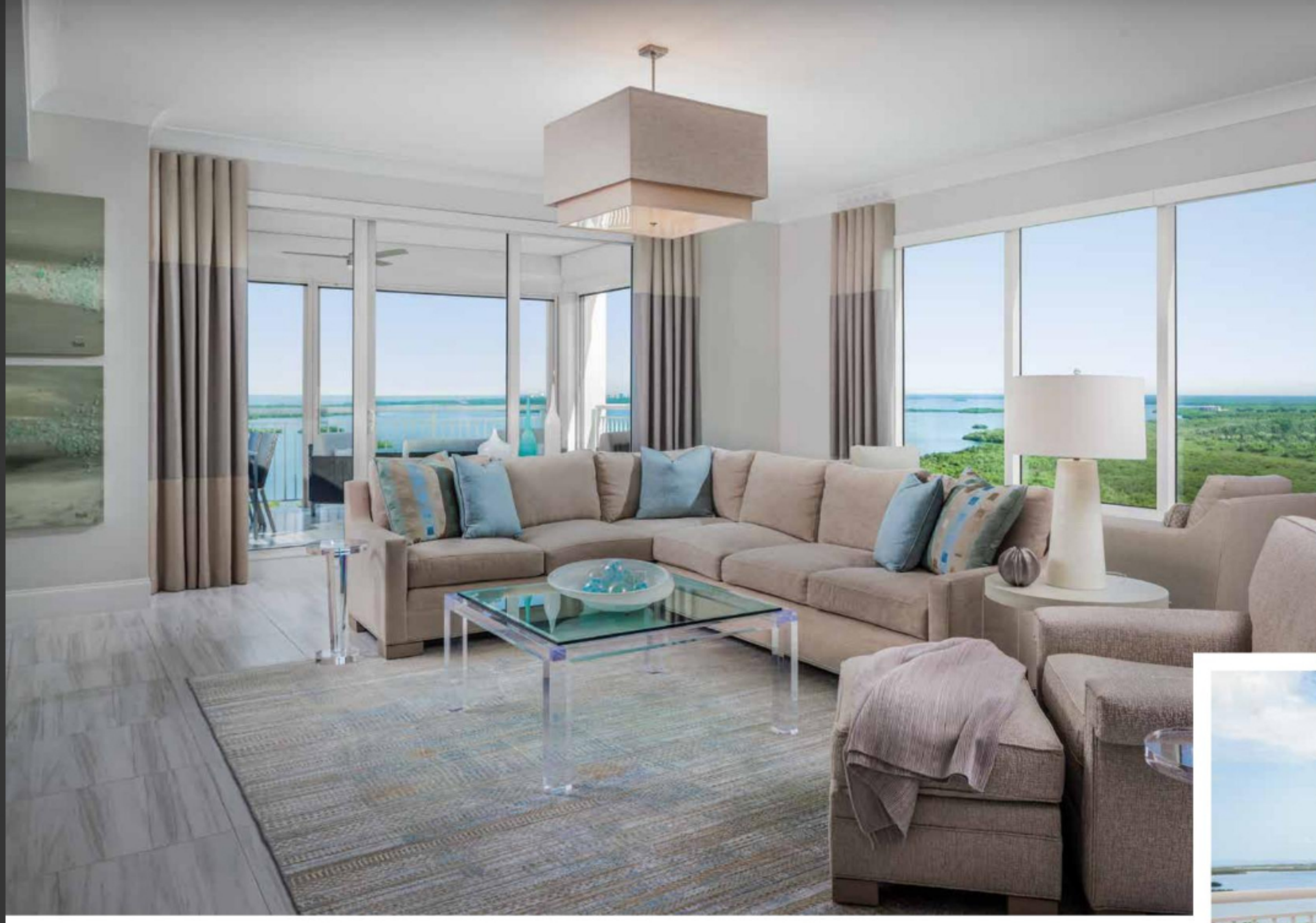
Above: The den décor began with the free-floating lounge and soft blue area rug from Hadlinger Flooring. Cut velvet animal print fabric from Kravet enlivens the accent pillows on the American Leather sleeper sofa from International Design Source. The pair of pearlescent faux leather ottomans on casters can easily be moved. The practical end tables are from Bernhardt, with lamps from FlowDecor.

Right: Hall used two queen beds instead of a king, "because they are wonderful in small spaces." Dressed in "wonderfully fluffy and puffy" coverlets from Pine Cone Hill, the beds flank a nightstand in white lacquered grasscloth from Bungalow 5. The long accent pillows are covered in a Robert Allen fabric that brings the room's neutrals and sea glass colors together. The Worlds Away light fixture adds a metallic geometric touch in subdued silver.

292 homedesign.net



homedesign.net 293



Instead, they use touches like the hand-blown glass bowl full of bubble-like glass balls atop the Bernhardt Lucite coffee table in the great room. Chosen to allow the turquoise and aqua hand-knotted area rug to shine through, the table and a complementary Lucite end table from Interlude Home add a lot of sparkle themselves. >

Above: Apollo Grey porcelain tile unifies the main living area. Durable pet- and kid-friendly Kravet custom fabric covers the Vanguard Furniture sectional, a neutral backdrop for Kravet culture pillows. The two-tier drum chandelier from Wilson Lighting adds to the subtle geometric patterns scattered throughout the room. Mary Hong's artwork from John Richard features tiles of hand-poured broken glass embedded in a high-gloss vitreous finish.

294 homedesign.net

Written by Ginny Peterson
Photography by Rick Betham

Interior Designer
Diana Hall Design
1929 Trade Center Way
Naples, FL 34109
239.272.6262
dianahalldesign.com

Resources:

Hadlinger Flooring
6401 Airport-Pulling Road North
Naples, FL 34109
239.566.7100
hadlingerflooring.com

International Design Source
6001 Taylor Road
Naples, FL 34109
239.591.1114
idsi.com

Wilson Lighting
2465 Trade Center Way
Naples, FL 34109
239.592.6006
wilsonlighting.com

Below: In the chef area, woven natural wicker chairs in Pewter from Lloyd Flanders surround the 40-inch white cast aluminum Mesa cocktail table from Cabana Coast from International Design Source. Oversized plexiglass in a muted blue were added for a plush effect. An "OG" garden stool from Emisary serves as an end table. Accessed from both the great room and the master bedroom, the lanai is protected with motorized hurricane shutters.



homedesign.net 295



DIANA HALL DESIGN



"Bringing your aesthetic to life..."

Exceptional interior design services and project management for your home. Luxury high rises, single family homes and new construction personalized to reflect your style.

1959 Trade Center Way Naples, FL 34109 239.388.5423 dianahalldesign.com



Diana Hall Elizabeth Manchego